

13. Finally fill the centre of the loading area with dominoes.

14. Place the Domino car on a flat surface and move the switch to the ON position. Watch the car lay down a perfect track of dominoes. Now you can knock down the dominoes! Remarks: If the dominoes collapse inside the loading area during operation, stop the car immediately to avoid any damage to the car.

#### E. TROUBLESHOOTING

If the Domino car does not run: • Make sure that the metal parts of the wires are in contact with the terminals. • Make sure you are using fresh batteries. • Make sure that all the gear teeth are interlocking properly.

#### F. HOW IT WORKS

Electricity from the battery makes the motor turn quickly. The worm gear on the motor turns the clutch. The clutch turns the gear and the gear turns the wheels, which makes the car move. At the same time the clutch turns the cam, which makes the slider move from side to side, pushing a domino onto the floor each time.

#### G. FUN FACTS

- In 2009 a team of domino topplers successfully toppled 4,491,863 dominoes at World Domino Day.
- The game of dominoes was invented in China more than 800 years ago. There are now many different forms of the game played around the world.
- Traditional dominoes are made from materials such as hardwood, ivory, bone, marble and ceramics.
- Because dominoes were once made from carved bone, they are sometimes called bones instead of dominos.
- Nobody knows why dominoes are called dominoes, but it's possibly from the Latin word 'dominus', meaning lord or master.
- The 'domino effect' is a phrase used to mean when one event causes another, like one toppling domino toppling the next one in line.

#### QUESTION AND COMMENTS

We treasure you as a customer and your satisfaction with this product is important to us. In case you have any comments or questions, or you find any parts of this kit missing or defective, please do not hesitate to contact our distributor in your country, whose address is printed on the package. You are also welcome to contact our marketing support team at Email: [infodesk@4M-IND.com](mailto:infodesk@4M-IND.com), Fax (852) 25911566, Tel (852) 28936241, Web site: [WWW.4M-IND.COM](http://WWW.4M-IND.COM)

# DOMINOBOT

PLEASE SCAN THE QR CODE TO VIEW MULTI-LANGUAGE INSTRUCTIONS



FR. Veuillez scanner le code QR pour afficher les instructions multilingues pour ce kit. DE. Bitte scannen den QR-Code, um die mehrsprachige Anleitung für dieses Set anzusehen. NL. Scan de QR-code om de instructies voor deze set in verschillende talen te bekijken. IT. Scansiona il codice QR per visualizzare le istruzioni multi-lingue per questo kit. ES. Escanee el código QR para ver instrucciones en varios idiomas para este kit. JA. QRコードをスキャンして、本キットの多言語説明書をご覧ください。

**WARNING:**  
CHOKING HAZARD - Small parts.  
Not for children under 3 years.

TO PARENTS: PLEASE READ THROUGH THESE INSTRUCTIONS BEFORE PROVIDING GUIDANCE TO YOUR CHILDREN.

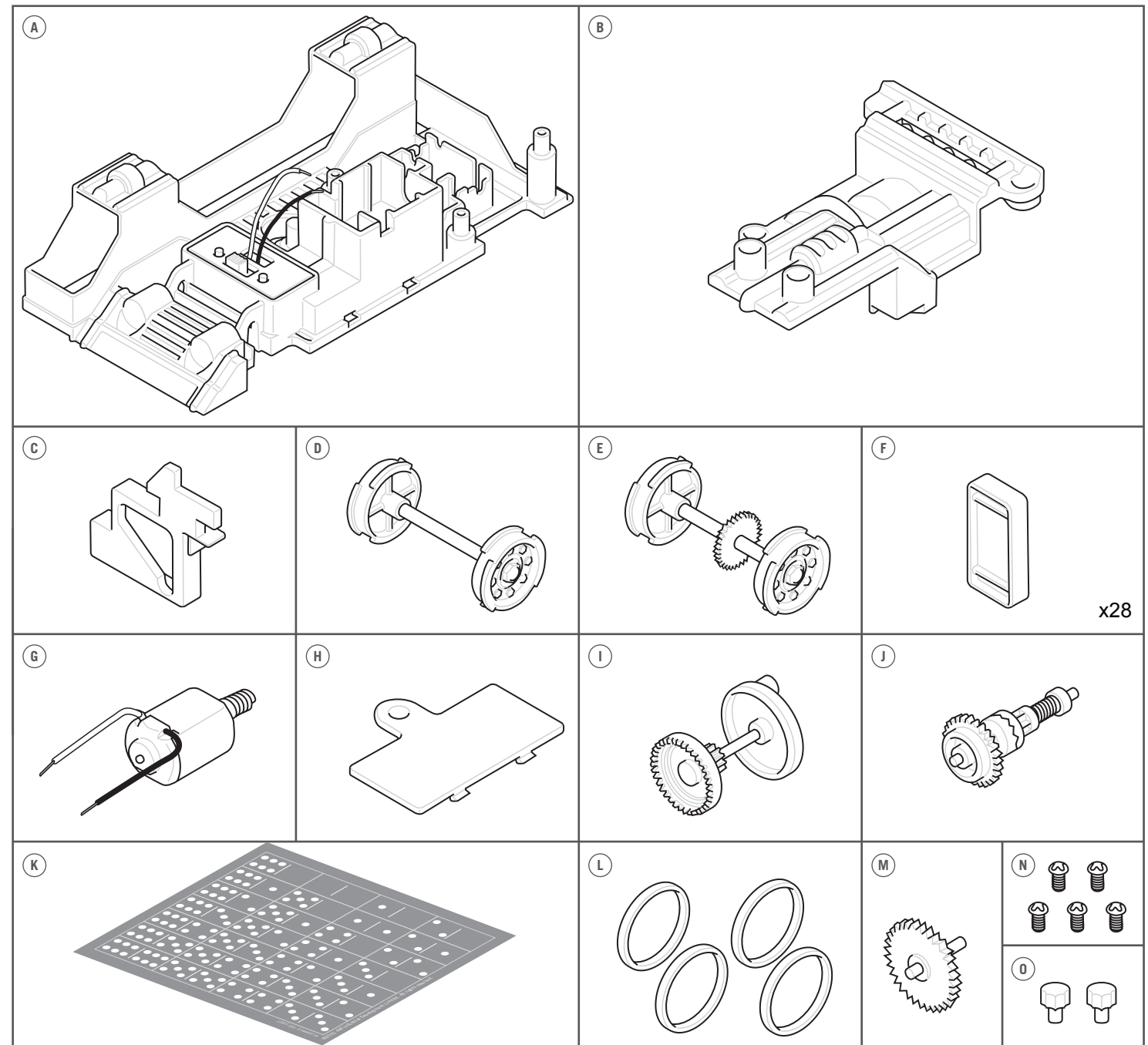
#### A. SAFETY MESSAGES

1. Please read through all the instructions and keep them since they contain important information.
2. Adult assistance and supervision are required.
3. This kit is intended for children 8 years or older.
4. This kit and its finished product contain small parts which may cause choking if misused. Keep away from children under 3 years old.
5. To prevent possible short circuits, never touch the contacts inside the battery case with any metal.
6. Only install batteries after the kit is assembled. Adult supervision is required.

#### B. USE OF BATTERIES

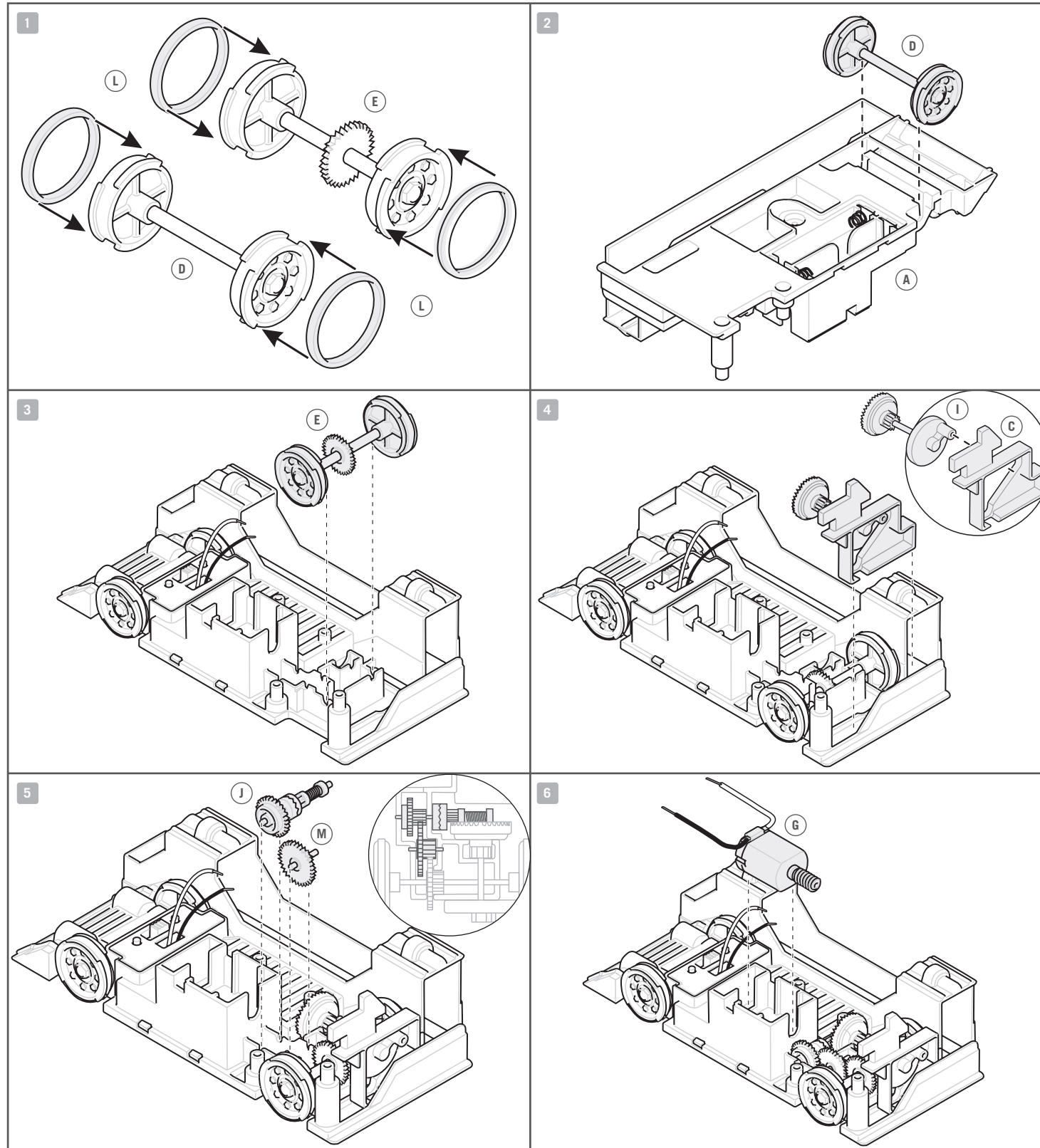
1. Requires two 1.5V AAA batteries (not included).
2. For best results, always use fresh batteries.
3. Make sure you insert the batteries with the correct polarities.
4. Remove the batteries from the kit when not in use.
5. Replace exhausted batteries straight away to avoid possible damage to the kit.
6. Rechargeable batteries must be removed from the kit before recharging.
7. Rechargeable batteries must be recharged under adult supervision.
8. Make sure that the supply terminals in the battery case are not short circuited.
9. Do not attempt to recharge non-rechargeable batteries.
10. Do not mix old and new batteries.
11. Do not mix alkaline, standard (carbon-zinc), or rechargeable batteries.

#### C. CONTENTS

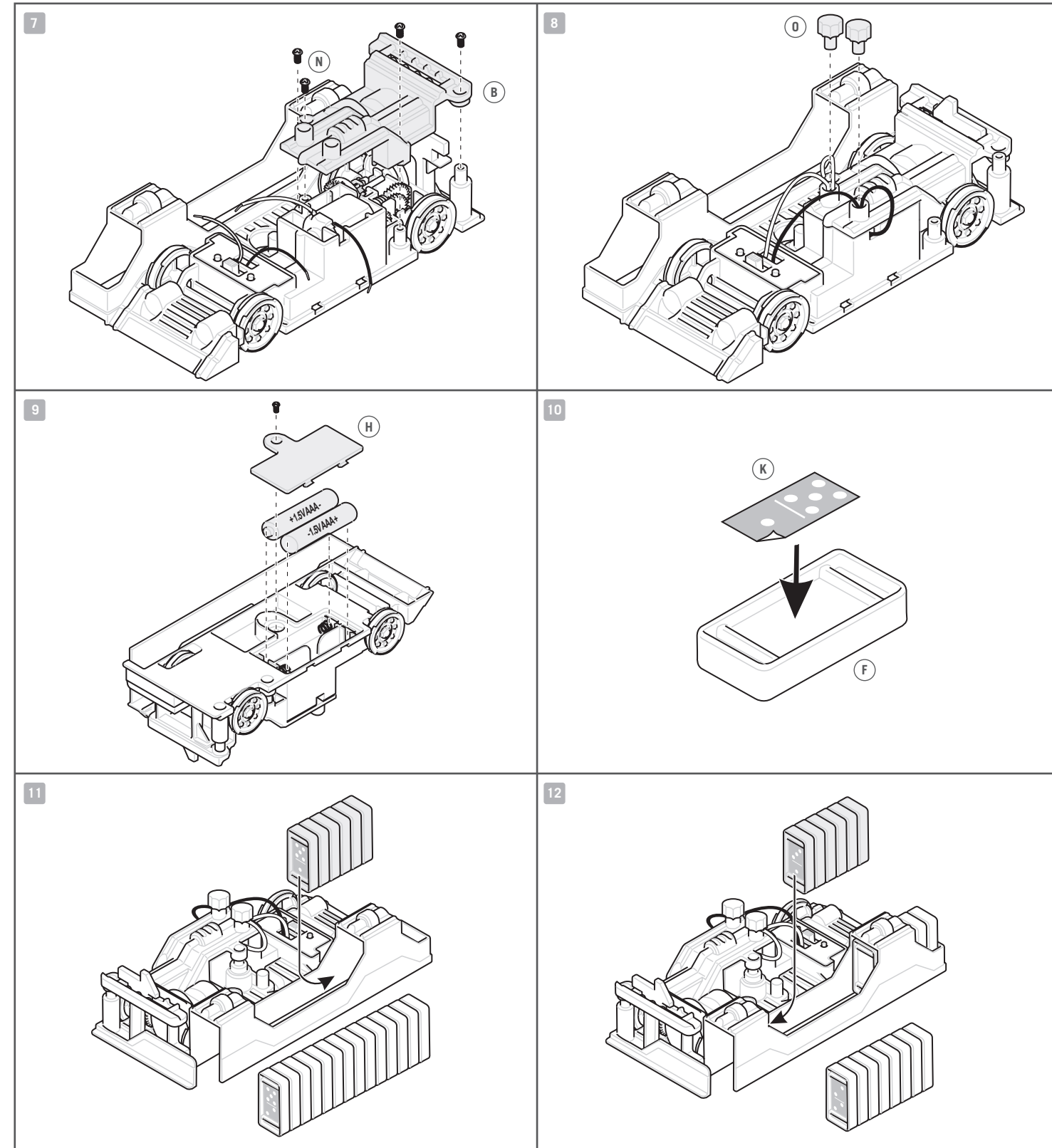


Part A: car body, Part B: motor cover, Part C: slider, Part D: front wheels, Part E: rear wheels, Part F: dominoes x 28, Part G: motor, Part H: battery cover, Part I: cam with gear, Part J: clutch, Part K: stickers, Part L: tyres x 4, Part M: gear, Part N: screws, Part O: terminal caps. Also required but not included in the kit: 2 x 1.5-volt AAA batteries, a small crosshead screwdriver.

## D. INSTRUCTIONS



1. Put the tyres (L) on the wheels (D) and (E).
2. Turn the car body (A) over and slot in the front wheels.
3. Turn the car body the right way up again. Slot the rear wheels into the body.
4. Insert the cam with gear (I) and the slider (C) into the body, making sure that the pin on the cam fits into the slider.
5. Insert the gear (M) into the body, making sure that the teeth interlock with the gear on the rear wheels. Also add the clutch (J), making sure its teeth interlock with the gear and the cam with gear.
6. Insert the motor (G) into its housing in the body.



7. Add the motor cover (B) and secure it with four screws (N).
8. Insert the ends of the two red wires into one of the terminals and secure them with a terminal cap (O). Repeat with the two black wires in the other terminal.
9. Insert the two batteries (the flat ends of the batteries must be against the springs), then add the battery cover (H) and secure it with a screw. Adult supervision is required.
10. Add one sticker to each domino.
11. Slide a few dominoes into the front of the loading area.
12. Slide a few dominoes into the rear of the loading area.